

## MULTI AXIS SYSTEM

SNR Linear Axis can be quickly combined with each other and integrated into existing systems. They bring additional advantages through their reliability and durability. NTN-SNR Engineering provides one-stop support for the design of individual Linear Axis and the development of system solutions. Through the optimal interaction of mechanics and electronics we offer short design times and optimized system configurations.

### STANDARD SOLUTIONS

### STANDARD COMBINATIONS



### SPECIAL SOLUTIONS

### SPECIAL SOLUTIONS FOR CUSTOMER-SPECIFIC APPLICATIONS

E. g. Lifting axis with safety brakes and clamping elements



# LINEAR AXIS RANGE

### Further information

- On our Website: [www.ntn-snr.com](http://www.ntn-snr.com)
- In our catalogues



Please send your requests to:  
[linear@ntn-snr.de](mailto:linear@ntn-snr.de)



Present all over the world

This document is the exclusive property of NTN-SNR ROULEMENTS. Any total or partial reproduction hereof without the prior consent of NTN-SNR ROULEMENTS is strictly prohibited. Legal action may be brought against anyone breaching the terms of this paragraph.  
NTN-SNR ROULEMENTS shall not be held liable for any errors or omissions that may have crept into this document despite the care taken in drafting it. Due to our policy of continuous research and development, we reserve the right to make changes without notice to all or part of the products and specifications mentioned in this document.  
© NTN-SNR ROULEMENTS, international copyright 2021

NTN-SNR ROULEMENTS - 1 rue des usines - 74000 Anancy  
RCS ANNECY B 325 821 072 - Code APE 2815Z - Code NACE 28.15  
[www.ntn-snr.com](http://www.ntn-snr.com)

NTN SNR With You

DOC\_L.AXIS\_ARGZ.GBa - Conception et réalisation : Service publicite NTN-SNR © 2021 / 03 - Photos: © Pedro Studio Photos - Shutterstock



# LINEAR AXIS RANGE

Linear engineering for professionals

NTN SNR

[www.ntn-snr.com](http://www.ntn-snr.com)



With You

## COMPACT AXIS

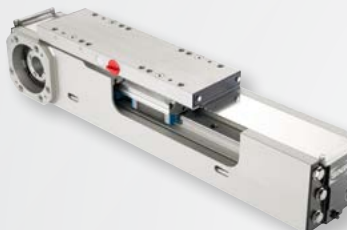


### AXC SERIES

Size 40, 60, 80, 100, 120

Modular design, system universally applicable as single-axis or in complex multi-axis systems

- Different guiding and drive options
- Optimal ratio between stroke and total length
- Long-life and low maintenance costs



### AXF SERIES

Size 100

Based on the AXC series.

- Available with toothed belt and screw drive
- Specially developed to prevent the deposit of residues at the profile.
- Specifically optimized for food, pharmaceutical and semiconductor industries applications

## PRECISION AXIS



### AXBG SERIES

Size 15, 20, 26, 33, 46, 55

- Extremely compact design and very rigid steel profile
- High positioning accuracy

## PARALLEL AXIS



### AXDL SERIES

Size: 110, 160, 240

- Profile with high rigidity (especially with toothed belt drive)
- Protection against contamination for guiding and drive system
- Long-life and low maintenance costs

## LINEAR TABLES AXIS

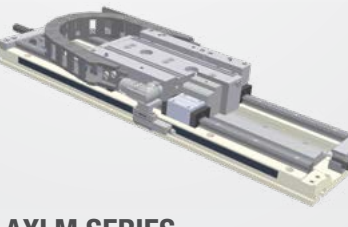


### AXLT SERIES

Size: 155, 225, 325, 455

- Particularly suitable for high loads, especially torque loads
- Protected guidance and drive system by optional bellows
- Can be combined to create cross table variations

## LINEAR MOTORS AXIS

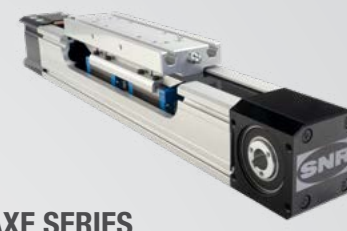


### AXLM SERIES

Size: 155, 225, 325

- High dynamics and high accuracy
- Two parallel linear guides as guiding system
- High loads, especially torque loads

## STANDARD AXIS



### AXE SERIES

Size: 40, 60, 80, 100, 110, 160

- Standard length and accessories
- Online configuration

## GANTRY, BEAM, LIFTING AND TELESCOPIC AXIS



### AXS SERIES

#### Telescopic axis

- For vertical and horizontal applications
- Velocity up to 10 m/s

#### Beam axis

- For parallel use with a large spacing and large travel ranges
- Tolerance compensation system

#### Lifting axis

- For weights over 1000 kg

#### Gantry axis

- Undivided length up to 10 m
- Toothed belt or rack and pinion drive

## A WIDE RANGE OF LINEAR AXIS

NTN-SNR has been established in the linear technology market since 1985 and strives to offer a complete and competitive product range. SNR Linear Axis are developed and manufactured in our plant in Bielefeld. With a well-organised network of sales engineers and sales agents worldwide we can offer you dedicated and competent technical support at any time.

SNR Linear Axis are universally applicable modules that accommodate the steadily growing requirements for the automation of installation and manufacturing processes.

They are suitable for the most diverse applications in various industries: factory automation, machine tools, electrical engineering/electronic hardware, automotive industry, printing industry, special-

purpose machines, clean-room applications in the semiconductor industry, food industry.

The modular design of our axis allows a high flexibility and thus can fulfill almost every customer request. SNR linear axis can be quickly combined with each other and integrated into existing systems. It also means lower assembling costs for the end user.

## TECHNICAL CHARACTERISTICS

	SIZE	GUIDING SYSTEM			DRIVE SYSTEM						MAX. DYNAMIC LOAD CAPACITY			MAX. DYNAMIC TORQUE LOADS			PROTECTION VERSION			MAX LENGTH (one-piece)
		A, B, C, D, E, H, G, R, S, T, U	L, M	P	A, Y, Z	S	T	G	M	E	Fy [N]	Fz [N]	-Fz [N]	Mx [Nm]	My [Nm]	Mz [Nm]	Cover strip	Bellows	Cover plate	[M]
AXC	40, 60, 80, 100, 120										10500	10500	10500	140	2150	2150	x			8**
AXF	100										7000	7000	7000	200	325	325	x			6
AXBG	15, 20, 26, 33, 46, 55										86,4*	86,4*	86,4*	3153*	3190*	3802*			x	1,489
AXDL	110, 160, 240										12500	12500	12500	1050	2250	2250	x			6,35
AXLM	155, 225, 325										37070	51270	22870	2350	5220	5220		x	x	3,2
AXLT	155, 225, 325, 455										33000	33000	33000	5000	4700	4700		x		3,2
AXS	110, 120, 200, 230, 240, 280, 300, 460, 500										50500	50500	50500	10000	12000	12000				12**
AXE	40, 60, 80, 100, 110, 160										6000	9000	9000	475	475	475				8,14**

\* with 2 long carriages  
\*\* undivided

