



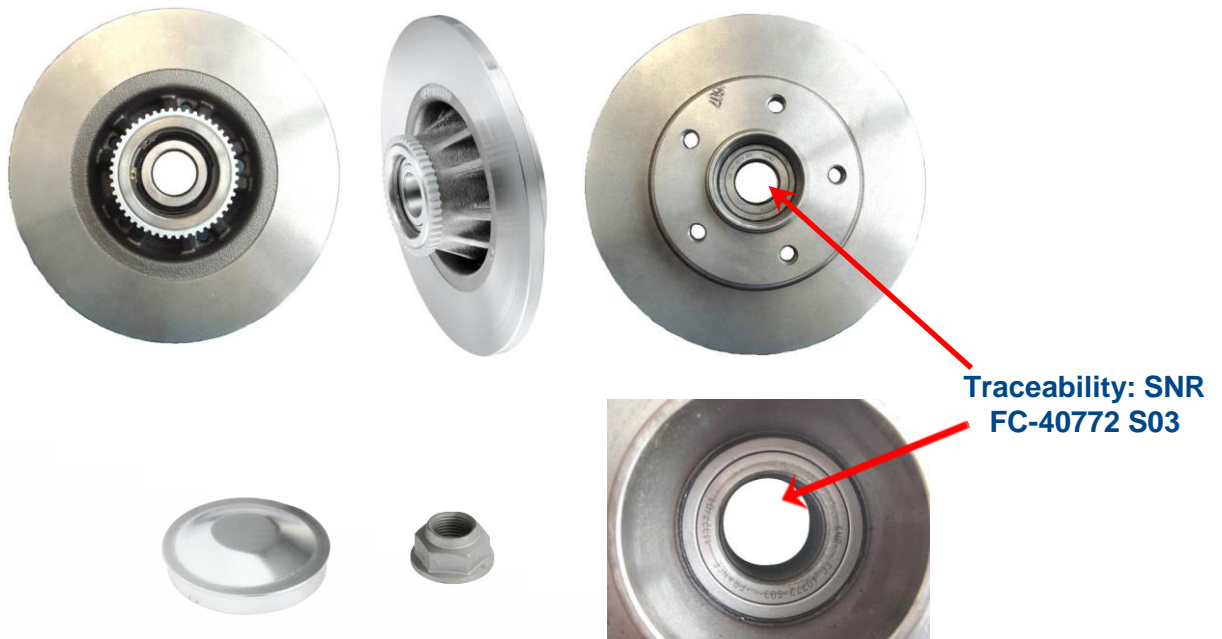
KF155.70U/EN/05/2022

KF155.70 U

Removal / Installation recommendations

<p>NISSAN: Primastar, Primastar FL, OPEL: Vivaro, Vivaro FL RENAULT: Trafic II, Trafic II FL VAUXHALL: Vivaro, Vivaro FL</p>	<p>OE reference <u>7711130076, 93161254,</u> <u>4413736, 43206-00QAE</u></p>
---	---

IDENTIFICATION OF BRAKE DISC HUB KIT KF155.70U



**Traceability: SNR
FC-40772 S03**

COMMON PROBLEMS WITH THIS KIT

PROBLEMS WITH BROKEN BRAKE DISCS OR NOISE WHILST IN MOTION

PROBABLE CAUSES

Brake system malfunction.

This occurs when the calipers seize or the handbrake system locks up. The disc remains locked and as a result the disc hub is subjected to a high increase in temperature. The brake disc inevitably fractures and breaks (no. 1).



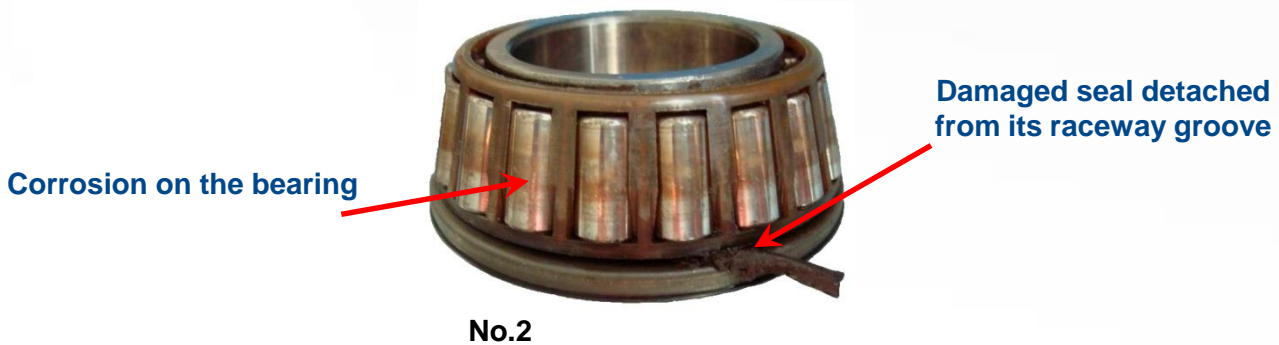


The vehicle should not be driven until repairs to the braking system have been made.

Incorrect installation of the disc hub on to the stub axle.

Incorrect fitment of the disc hub assembly when mounting it on to the stub axle can lead to the disc hub assembly being fitted askew, this damages the inner rings of the bearing and prevents correct adjustment, this results in a rapid failure of the disc hub.

Incorrect installation of the inner ring, which detaches from its raceway groove, causes the bearing to open. The open bearing then causes serious damage to the seal, this then allows contaminants such as water to enter the bearing (no. 2). This results in rust damage causing the bearing to become noisy and greatly shorten its service life (no. 2).



This failure is irreversible, the bearing and disc have to be replaced as a complete unit KF155.70U

REQUIRED TOOLS

- Centering sleeve Réf. Clas OM 4217
- Brake piston wind back tool OE (KM-6237-C) Réf. Clas OM 81



REMOVAL

- 1) Raise up the vehicle on a platform
- 2) Remove the rear wheels
- 3) Remove the brake calliper with its bracket from the stub axle
- 4) Remove the dust cap
- 5) Remove the wheel hub screw
- 6) Remove the brake disc
- 7) Wind back the brake caliper pistons, using a Brake piston wind back tool OE: KM-6237-C



RE-INSTALLATION

1) Re-install the components in the reverse order of removal

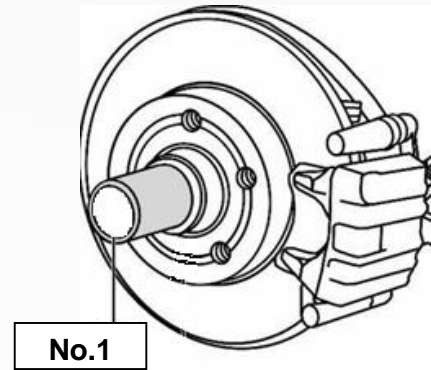
In order to facilitate the correct insertion of the disc hub on the stub axle, the use of a centering sleeve (**No.1**) is recommended

Tightening torque of the central nut: **280 Nm**

Tightening torque for brake calliper re-installation: **35 Nm**

Tightening torque of the wheel fasteners: **160 Nm**

2) Take a test drive on the road



It is essential to use the new nut supplied in the kit.

Recommendations

It is important to follow the manufacturer's installation procedures and to apply the specified tightening torques, as well as replacing all of the parts supplied in the kit.

This is a safety item, please note that it is advised that both discs are changed at the same time.

Refer to the vehicle applications in our online catalogue: [e-shop](#)



Scan this QR code to access our online catalogue.

FOLLOW THE RECOMMENDATIONS OF THE VEHICLE MANUFACTURER.

©NTN-SNR ROULEMENTS

The contents of this document are the copyright of the publisher and any reproduction, even partial, is prohibited without permission.

Despite the care taken in preparing this document, NTN-SNR Roulements disclaims any liability for errors or omissions that may slip through, as well as for losses or direct or indirect damage arising from its use.

