



KF155.70U

Assembly/disassembly recommendations

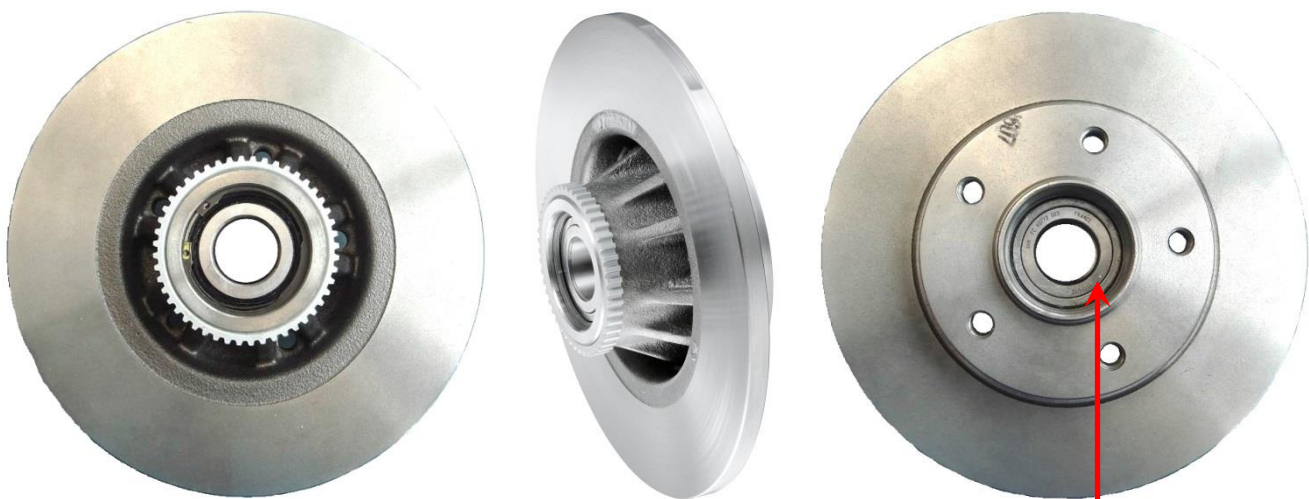
NISSAN:	Primastar, Primastar FL,
OPEL:	Vivaro, Vivaro FL
RENAULT:	Trafic II, Trafic II FL
VAUXHALL:	Vivaro, Vivaro FL

OE reference

7711130076, 93161254,
4413736, 43206-00QAE

IDENTIFICATION OF BRAKE DISC HUB KIT

NTN-SNR KF155.70U



Traceability: SNR FC.40772.S03



COMMON PROBLEMS WITH THIS KIT

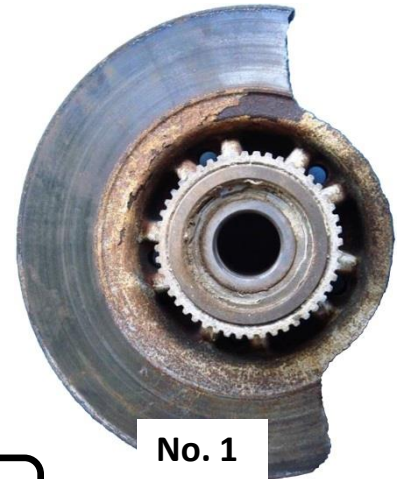
PROBLEMS WITH BROKEN BRAKE DISCS OR NOISE WHILST IN MOTION

Probable causes

Brake system malfunction.

This occurs when the calipers seize or the handbrake system locks up.

The disc remains locked and as a result the disc hub is subjected to a high increase in temperature. The brake disc inevitably fractures and breaks **(no. 1)**.



The vehicle should not be driven until repairs to the braking system have been made.

Incorrect installation of the disc hub on to the stub axle.

Incorrect fitment of the disc hub assembly when mounting it on to the stub axle can lead to the disc hub assembly being fitted askew, this damages the inner rings of the bearing and prevents correct adjustment, this results in a rapid failure of the disc hub. Incorrect installation of the inner ring, which detaches from its raceway groove, causes the bearing to open. The open bearing then causes serious damage to the seal, this then allows contaminants such as water to enter the bearing **(no. 2)**. This results in rust damage causing the bearing to become noisy and greatly shorten its service life **(no. 2)**.

Corrosion on the bearing



Damaged seal detached from its raceway groove

No. 2



This failure is irreversible, the bearing and disc have to be replaced as a complete unit KF155.70U

REMOVAL:

- 1) Raise up the vehicle on a platform
- 2) Remove the rear wheels
- 3) Remove the brake calliper with its bracket from the stub axle
- 4) Remove the dust cap
- 5) Remove the wheel hub screw
Tightening torque for re-installation **280 Nm**
- 6) Remove the brake disc
Tightening torque for brake calliper re-installation **35 Nm**
- 7) Remove the safety ring
- 8) Push - compress the wheel bearing with a suitable tool
Backing plate kit OE: KM-6237-C

RE-INSTALLATION:

- 1) Re-install components in reverse order of removal
- 2) Take a test drive on the road

Recommendations

It is important to follow the manufacturer's installation procedures and to apply the specified tightening torques, as well as replacing all of the parts supplied in the kit.

This is a safety item, please note that it is advised that both discs are changed at the same time.

Refer to the vehicle applications in our online catalogue: eshop.ntn-snr.com



Scan this QR code to access our online catalogue.

FOLLOW THE RECOMMENDATIONS
OF THE VEHICLE MANUFACTURER.