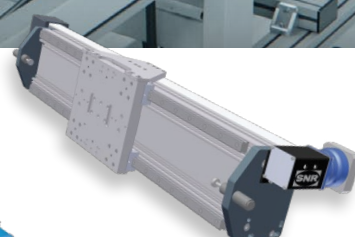
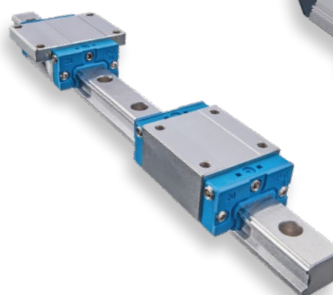
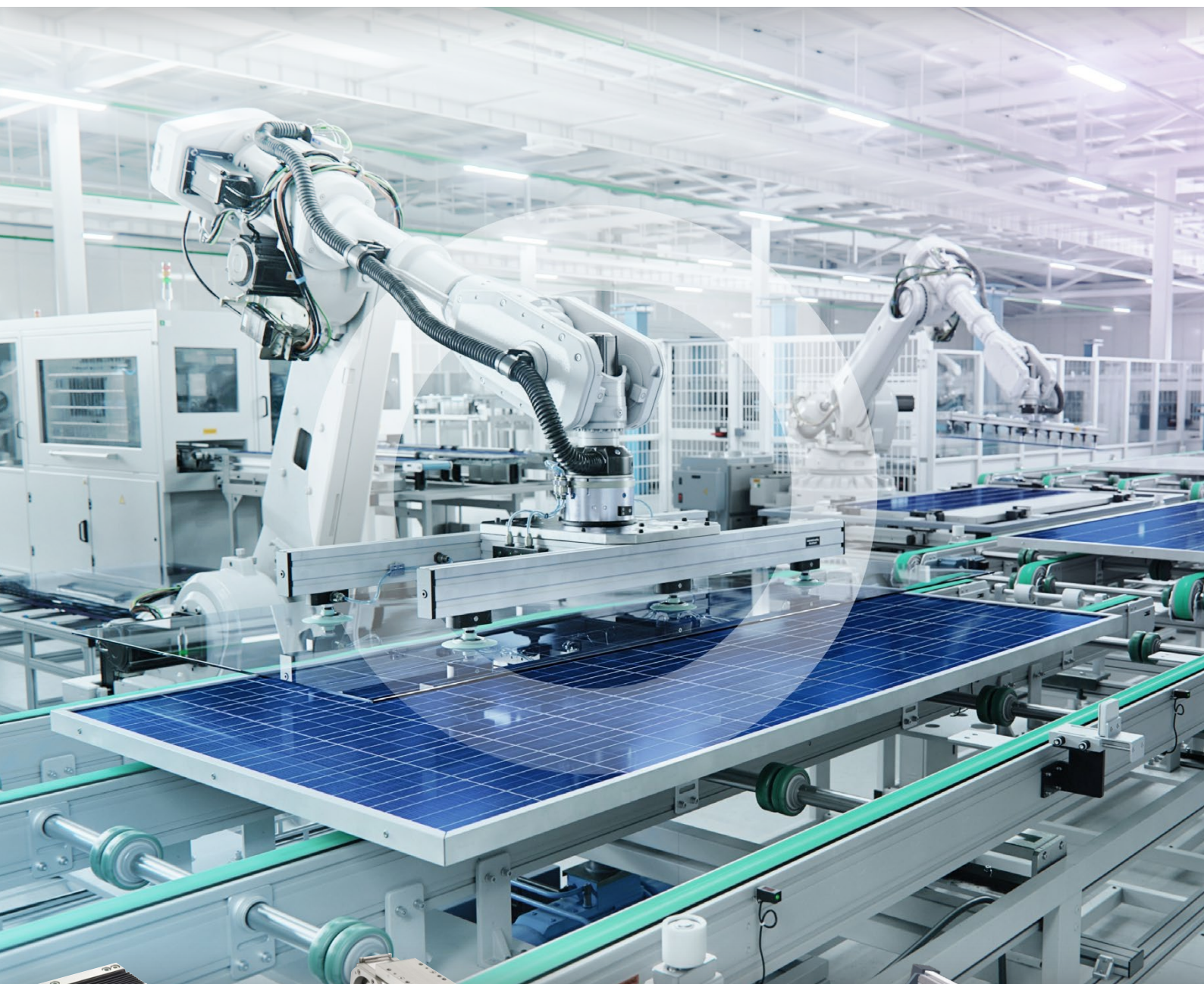




Brand of **NTN** corporation

LINEAR MOTION

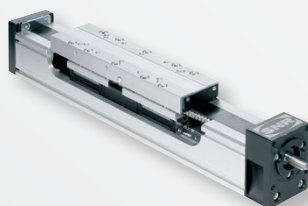
The solution adapted to all needs



A large linear motion range

to meet every application requirement

Compact axis

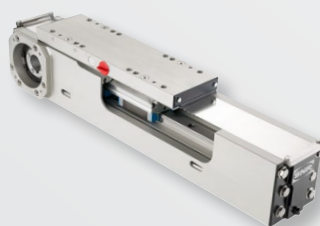


AXC series

Size 40, 60, 80, 100, 120

Modular design, system universally applicable as single axis and in complex multi axis systems

- Different guiding and drive systems
- Long-life and long-term maintenance free



AXF series

Size 100

Based on the AXC series

- Available with toothed belt and screw drive
- Specially developed to prevent the deposit of residues on the profile
- Specifically optimised for food, pharmaceutical and semiconductor industry applications

Parallel axis



AXDL series

Size 110, 160, 240

- Profile with high rigidity
- Protection against contamination for guiding and drive system
- Long-life and maintenance free long-term

Linear table axis

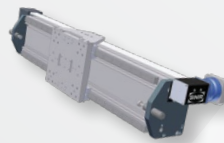
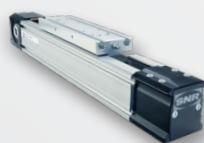


AXLT series

Size 155, 225, 325, 455

- Particularly suitable for high loads, especially torque loads
- Protected guiding and drive system by optional bellows
- Can be combined to cross table variations

Standard axis

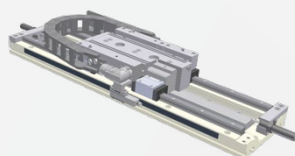


AXE series

Size 40, 60, 80, 100, 110, 160

- Standard axis for the application of single-axis and multi-axis systems
- Contamination-protected driving and guiding system
- Long maintenance intervals

Linear motor axis



AXLM series

Size 155, 225, 325

- High dynamics and high accuracy
- Particularly suitable for high loads, especially torque loads

Precision axis



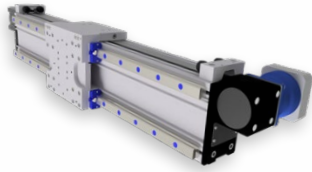
AXBG series

Size 15, 20, 26, 33, 46, 55

- Extremely compact design and very rigid steel profile
- High positioning accuracy

Heavy load axis

Gantry axis

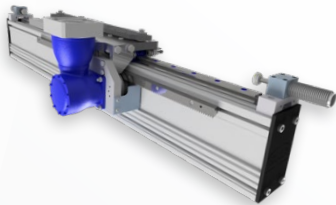


Size

200, 280, 460, 500

- Profile length up to 12 m (one-segment)
- Drive system: toothed belt, rack and pinion

Beam axis



Size

120, 300

- Profile length up to 12 m (one-segment)
- Axis for parallel use with rack and pinion drive
- Table with tolerance compensation system

Lifting axis



Size

200, 230, 280

- For loads over 2000 kg

Telescopic axis

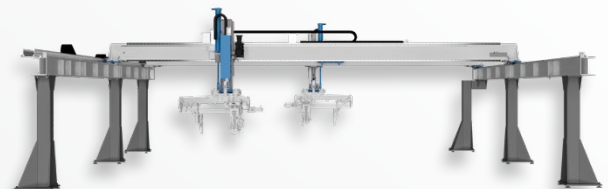


Size

110, 120, 200, 240, 280

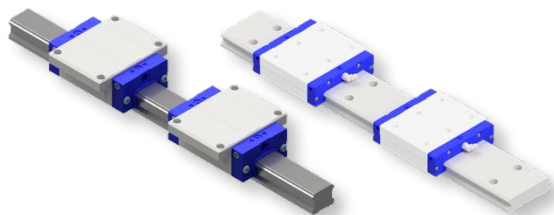
- For vertical and horizontal application
- For limited installation space
- Velocity up to 10 m/s

Complete systems



- Standard combinations of the series AXS, AXC and AXDL
- Ready for installation
- Optional with switches and energy chains, gantry support legs and all fastening elements
- Special solutions for specific or customised application

Linear guides

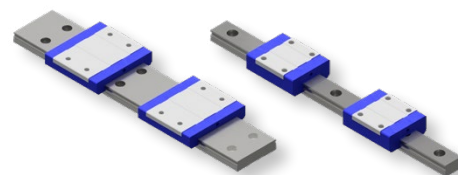


LGB

Standard linear guides size 15 – 55

Wide standard linear guides size 21 – 35

- Dimension according to DIN ISO 12090
- High load ratings
- Long-term maintenance free for carriages with ball chain
- «Endless rails»: jointed rails with segments that can be combined in any way
- Standard series with 4 ball rows and arrangement of a race way at a 45° angle
- Standard carriages with lubrication connection from all sides



LGM

Miniature guides size 07 – 15

Wide miniature guides size 09 – 15

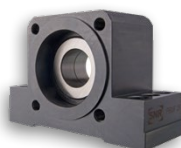
Ball screws



Rolled ball screws

Diameter 6 – 80 mm

- Flange type nuts according to DIN 69051, cylindrical, miniature and screw-in nuts
- Single nuts, single nuts with pitch offset and double nuts
- Standard end machining and customised end machining



Whirled ball screws

Diameter 8 – 120 mm

Bearing units BSTK, BSTF

for ball screws diameter 25 – 80 mm

- High load rating for vertical applications
- Easy assembling
- High service lifetime
- High rigidity

Bearing units BK, BF, EK, EF, FK, FF

for ball screws diameter 6 – 50 mm

- Asian range of bearing units
- Well known dimensions

Ball bushings



Diameter 3 - 150 mm

- Standard ball bushings and Super ball bushings
- Standard material and stainless steel available
- Linear units
- Support rails, shaft supports, traverses, solid and hollow shafts

This document is the exclusive property of NTN Europe. Any total or partial reproduction hereof without the prior consent of NTN Europe is strictly prohibited. Legal action may be brought against anyone breaching the terms of this paragraph. NTN Europe shall not be held liable for any errors or omissions that may have crept into this document despite the care taken in drafting it. Due to our policy of continuous research and development, we reserve the right to make changes without notice to all or part of the products and specifications mentioned in this document.
© NTN Europe, international copyright 2023.

NTN Europe - 1 rue des usines - 74000 Annecy
RCS ANNECY B 325 821 072 - Code APE 2815Z - Code NACE 28.15
www.ntn-europe.com

NTN

SNR

BCA
BEARINGS

BOWER

Brands of
NTN corporation

